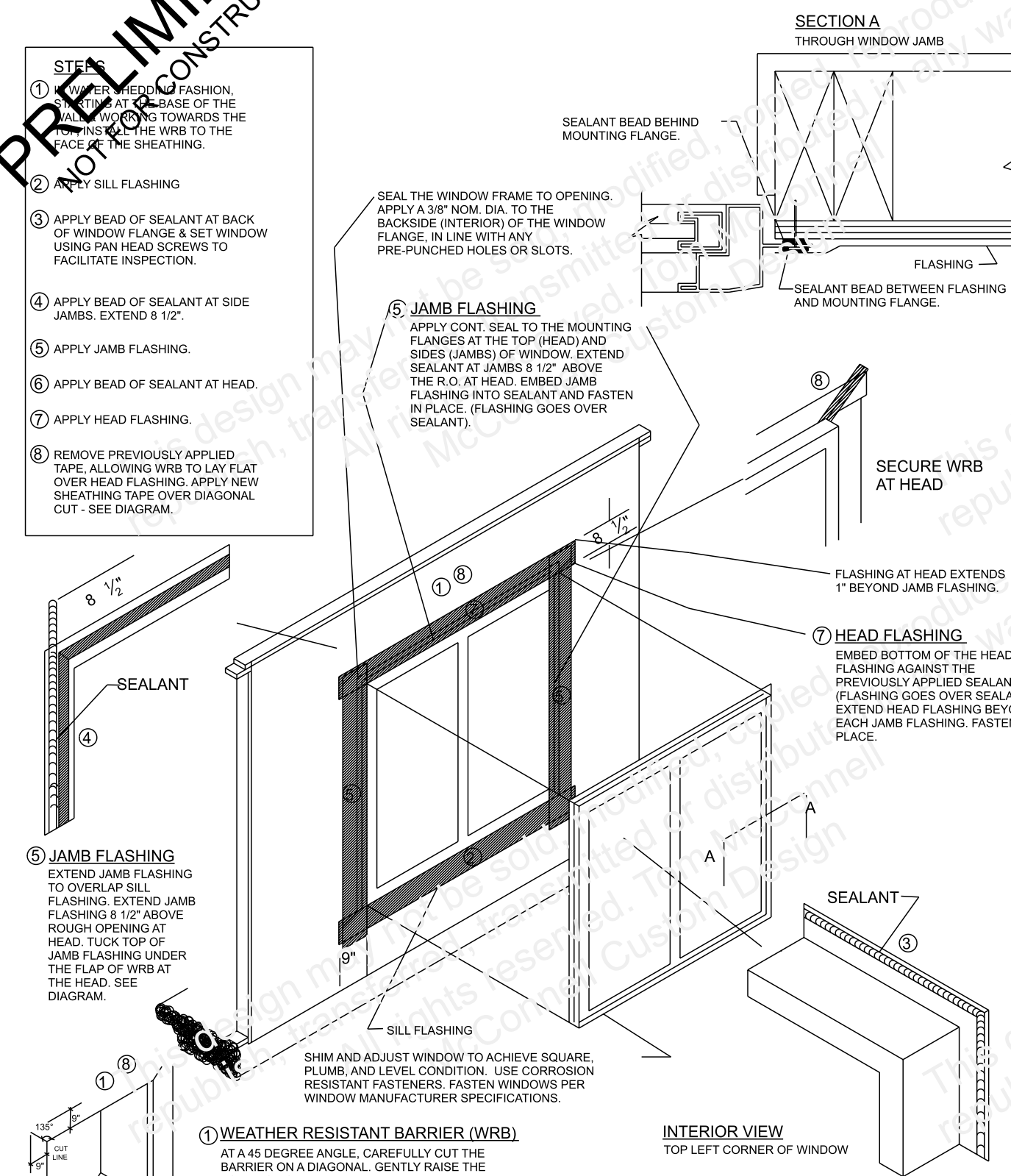


WINDOW INSTALLATION (METHOD A-1)

WEATHER RESISTANT BARRIER (WRB) APPLIED PRIOR TO THE WINDOW INSTALLATION. FLASHING APPLIED OVER THE FACE OF THE MOUNTING FLANGE.



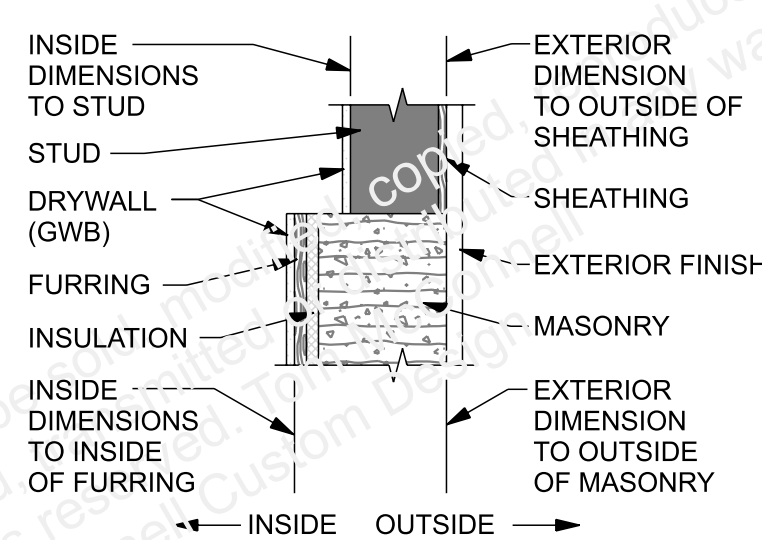
MASONRY NOTE:
WINDOWS AND DOORS IN THE MASONRY WALLS TO BE IN COMPLIANCE WITH SECTION R703.8, FMA/AAMA 200.09.

| AREA SCHEDULE | |
|-------------------------|----------------------|
| NAME | |
| Conditioned | 1790.0 sq ft. |
| Porch | 248.0 sq ft. |
| Garage | 484.0 sq ft. |
| Total Under Roof | 2522.0 sq ft. |

| ELECTRICAL LEGEND | |
|-------------------|--------|
| ELECTRICAL | SYMBOL |
| Elect Panel | |
| Smoke Alarm | |
| Smoke Alarm CO2 | |

| OPENING SCHEDULE | | | | |
|------------------|--------|------------|-----------|-------|
| OPENING ID | TYPE | WIDTH | HEIGHT | COUNT |
| 1 | WINDOW | 3'-0" | 3'-6" | 1 |
| 2 | WINDOW | 3'-0" | 6'-0" | 1 |
| 3 | WINDOW | 3'-0" | 5'-0" | 4 |
| 4 | WINDOW | 3'-0" | 2'-0" | 1 |
| 5 | WINDOW | 3'-0" | 2'-0" | 1 |
| 6 | WINDOW | 6'-0" | 3'-0" | 1 |
| A | DOOR | 3'-0" | 6'-8" | 1 |
| B | GARAGE | 16'-2 3/4" | 7'-1 3/5" | 1 |
| C | DOOR | 3'-0" | 6'-9" | 1 |
| D | DOOR | 3'-0" | 6'-9" | 1 |
| E | DOOR | 2'-8" | 5'-8" | 7 |
| F | BIFOLD | 6'-0" | 6'-8" | 3 |
| G | DOOR | 3'-0" | 6'-8" | 1 |
| H | DOOR | 2'-6" | 6'-8" | 2 |
| I | BIFOLD | 3'-0" | 6'-8" | 1 |
| J | BIFOLD | 5'-0" | 6'-8" | 2 |
| K | DOOR | 3'-0" | 6'-8" | 1 |

DIMENSION LEGEND



WALL LEGEND

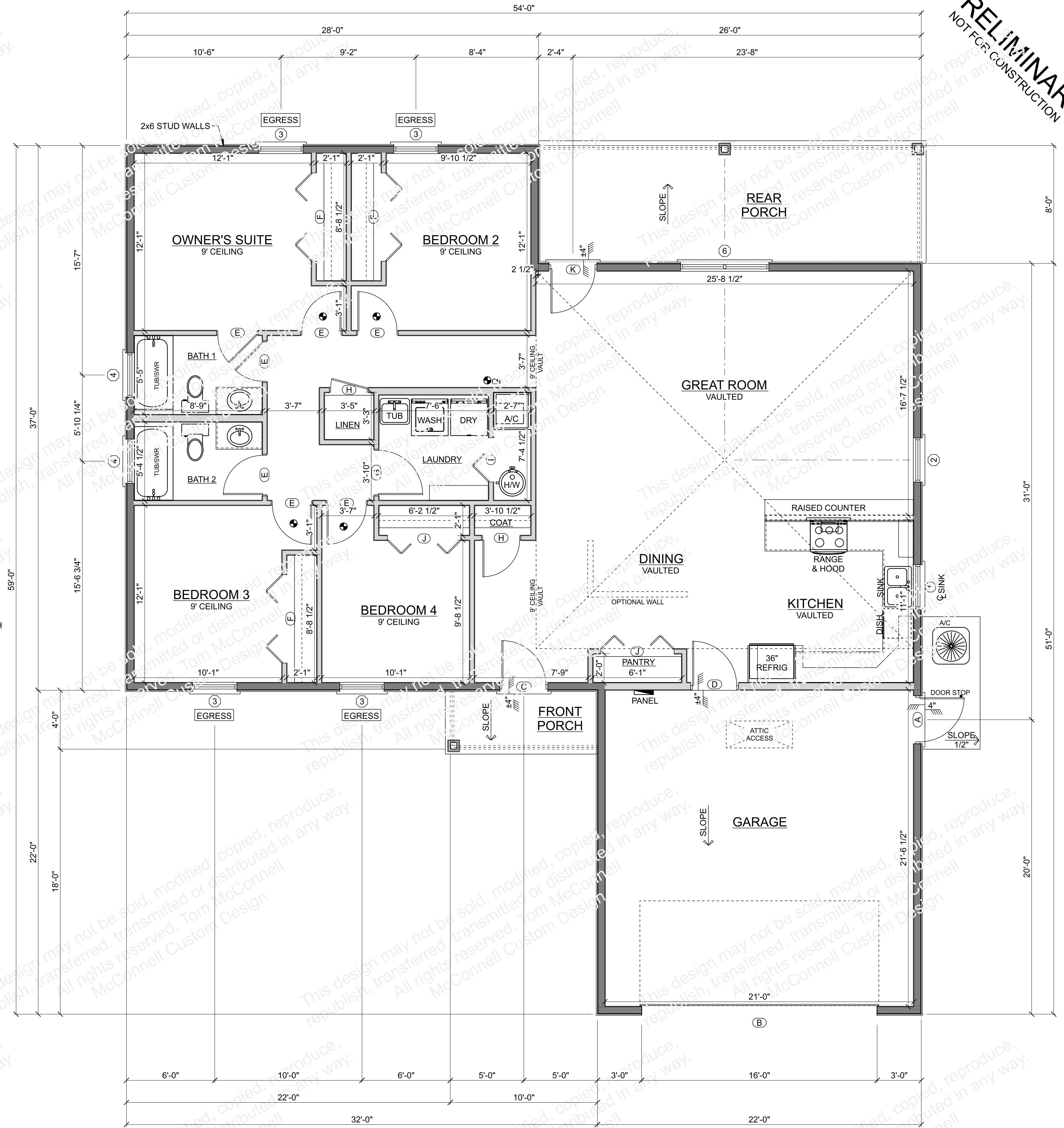
STUD WALL NEW

NOTES

ALL CONSTRUCTION TO BE IN COMPLIANCE WITH THE FLORIDA BUILDING CODE RESIDENTIAL 7TH EDITION 2020.

EGRESS INDICATES OPENING TO MEET EMERGENCY EGRESS REQUIREMENTS OF THE FLORIDA BUILDING CODE (CONTRACTOR VERIFY)

GARAGE OR STORAGE TO LIVING SPACE TO HAVE MINIMUM 1/2" GYPSUM WALL BOARD.
GARAGE OR STORAGE TO LIVING SPACE DOORS MINIMUM 1 3/8" SOLID CORE WOOD



FLOOR PLAN
SCALE: 1/4" = 1'-0"

PRELIMINARY
NOT FOR CONSTRUCTION

PRELIMINARY
NOT FOR CONSTRUCTION

McConnell Custom Design
Since 1994
Custom Design Keeping Structure in Mind
Custom House Plans - Addition Plans - Remodel Plans
St. Johns County, FL and Surrounding Area
Company: 10400 W. Lake Nona Blvd., Suite 100 (MCD)
303 Jasmine Place
St. Augustine, Florida 32086
(904) 794-4500
staugustinehouseplans.com
(ENGINEERING BY OTHERS)

New Residence for:
Your Name
Your Street
Your Town

FLOOR PLAN
NOTES

PRELIMINARY
NOT FOR CONSTRUCTION

PRELIMINARY
NOT FOR CONSTRUCTION

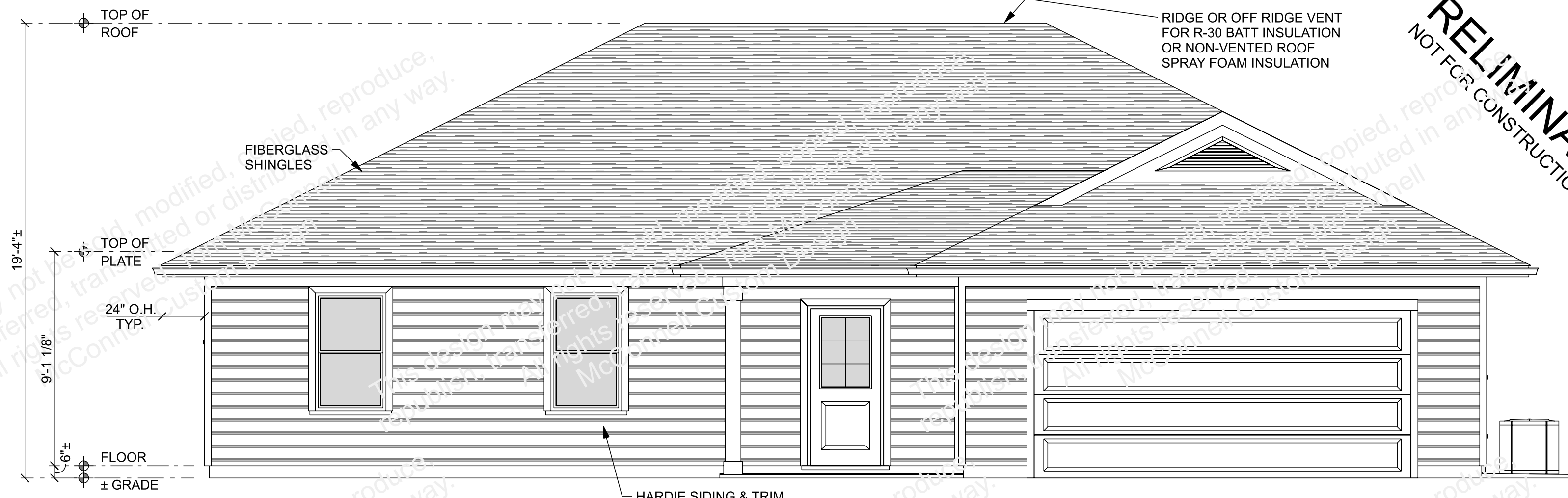
| REVISIONS | |
|-----------|--|
| | |
| | |
| | |
| | |

9/21/2022
MCD-HP-000-Common

A1

PRELIMINARY
NOT FOR CONSTRUCTION

This design may not be sold, modified, copied, reproduce, republish, transferred, transmitted or distributed in any way. All rights reserved. Tom McConnell
McCormell Custom Design

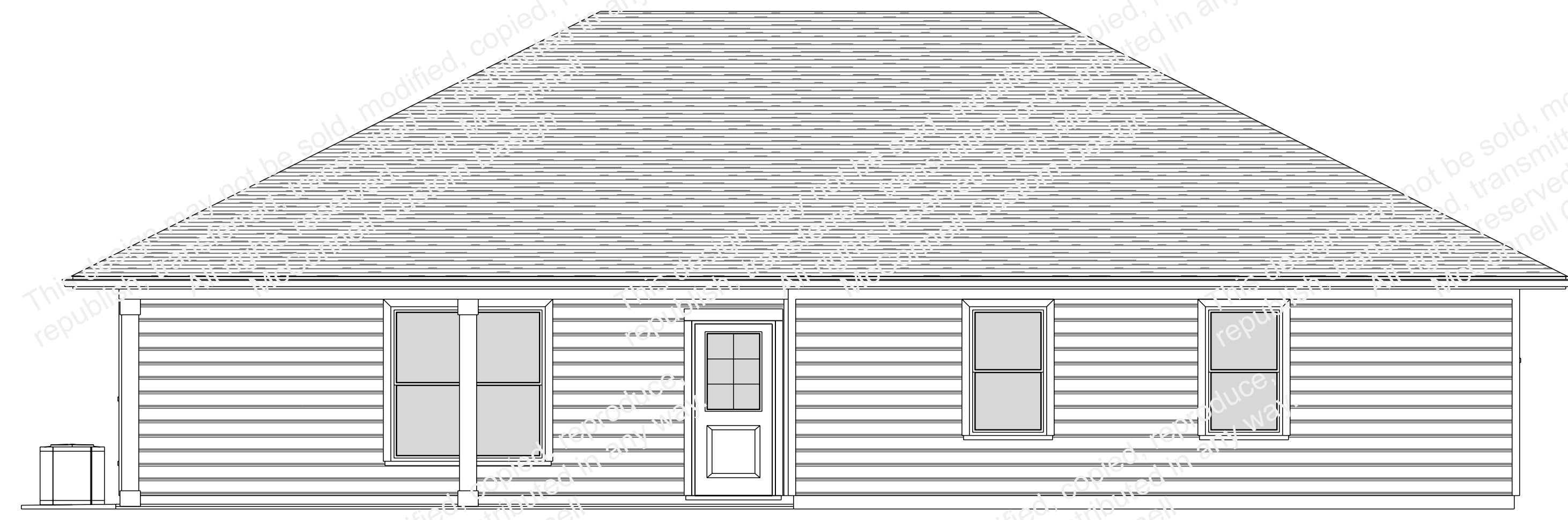


ELEVATION - FRONT
SCALE: 1/4" = 1'-0"

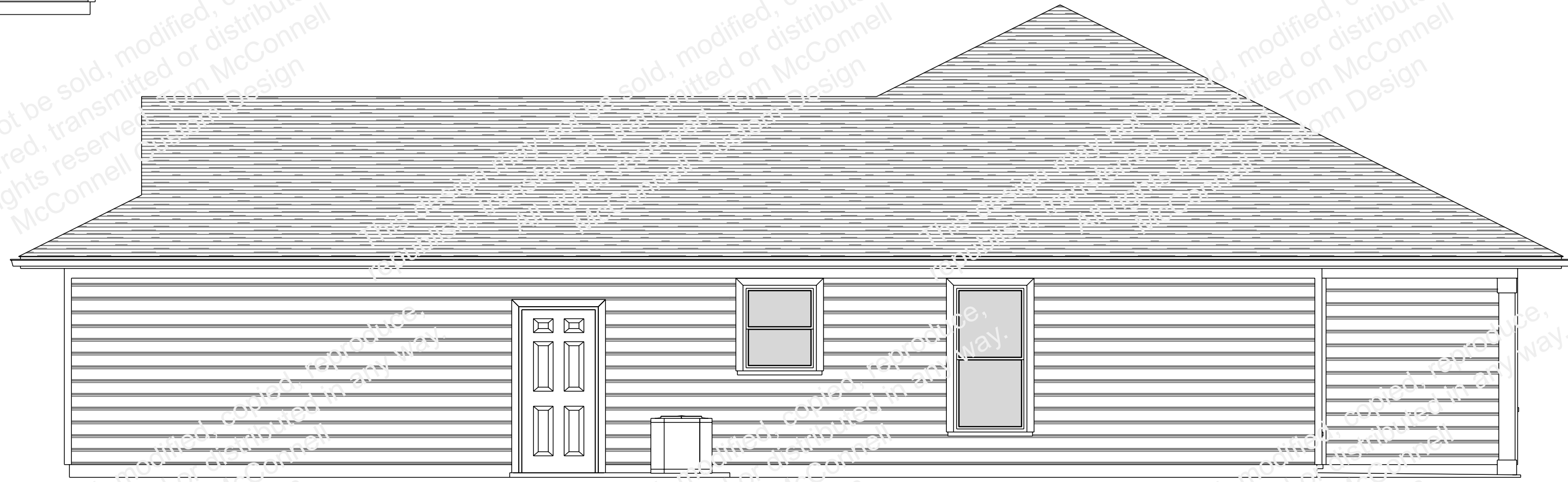
PRELIMINARY
NOT FOR CONSTRUCTION

MCD
Since 1994
McCormell Custom Design
Custom Design Keeping Structure in Mind
Custom House Plans - Addition Plans - Remodel Plans
St. Johns County, FL and Surrounding Area
Clermont, FL (Ocala)
303 Jasmine Place
St. Augustine, Florida 32086
(904) 794-4500
staugustinehouseplans.com
(ENGINEERING BY OTHERS)

New Residence for:
Your Name
Your Street
Your Town

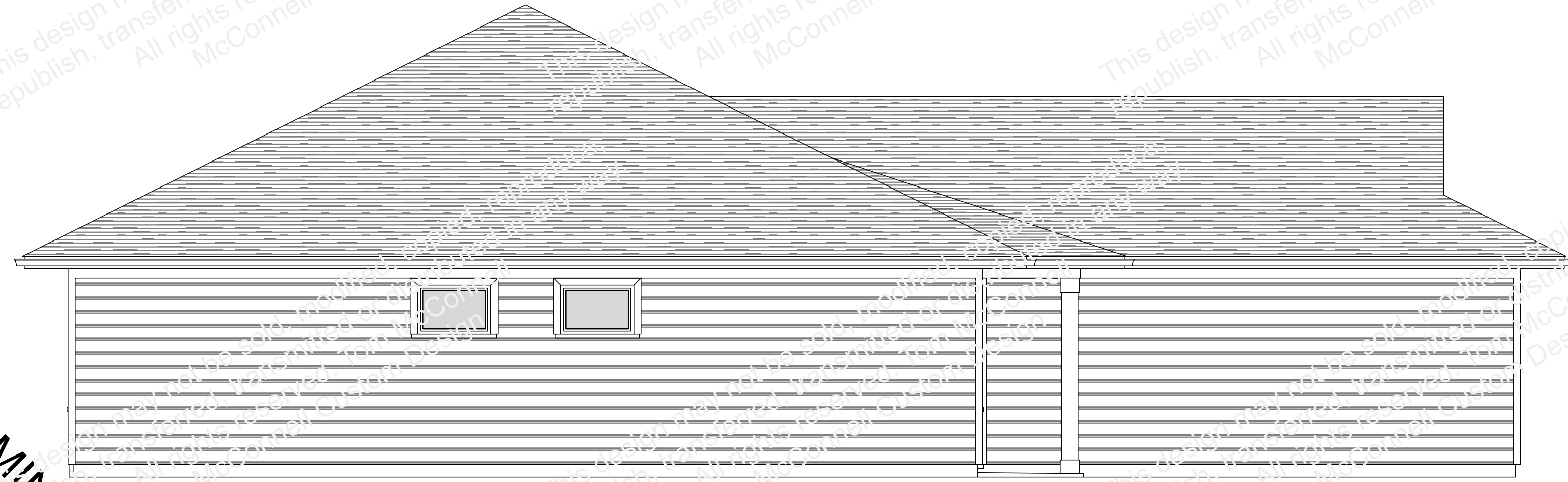


ELEVATION - REAR
SCALE: 1/4" = 1'-0"



ELEVATION - RIGHT
SCALE: 1/4" = 1'-0"

ELEVATIONS



ELEVATION - LEFT
SCALE: 1/4" = 1'-0"

PRELIMINARY
NOT FOR CONSTRUCTION

This design may not be sold, modified, copied, reproduce, republish, transferred, transmitted or distributed in any way. All rights reserved. Tom McConnell
McCormell Custom Design

This design may not be sold, modified, copied, reproduce, republish, transferred, transmitted or distributed in any way. All rights reserved. Tom McConnell
McCormell Custom Design

This design may not be sold, modified, copied, reproduce, republish, transferred, transmitted or distributed in any way. All rights reserved. Tom McConnell
McCormell Custom Design

This design may not be sold, modified, copied, reproduce, republish, transferred, transmitted or distributed in any way. All rights reserved. Tom McConnell
McCormell Custom Design

PRELIMINARY
NOT FOR CONSTRUCTION

REVISIONS

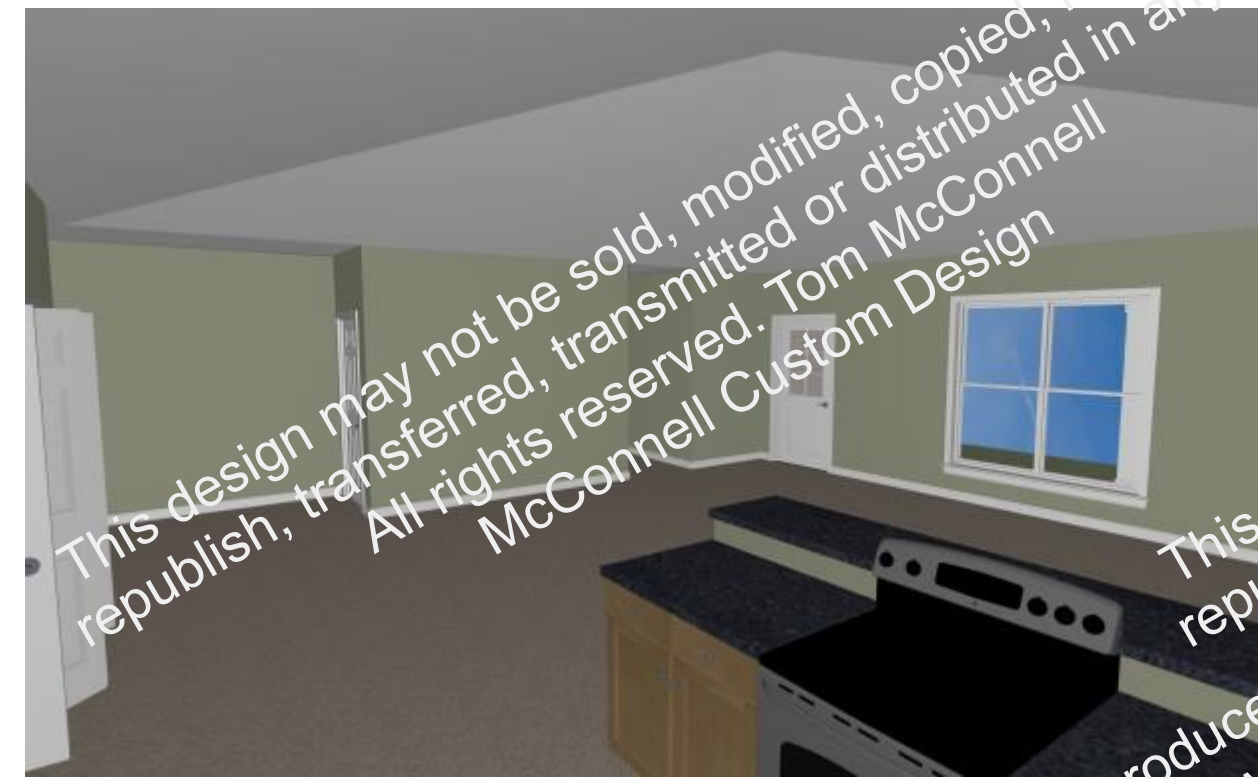
| | |
|--|--|
| | |
| | |
| | |
| | |

9/21/2022
MCD-HP-000-Common

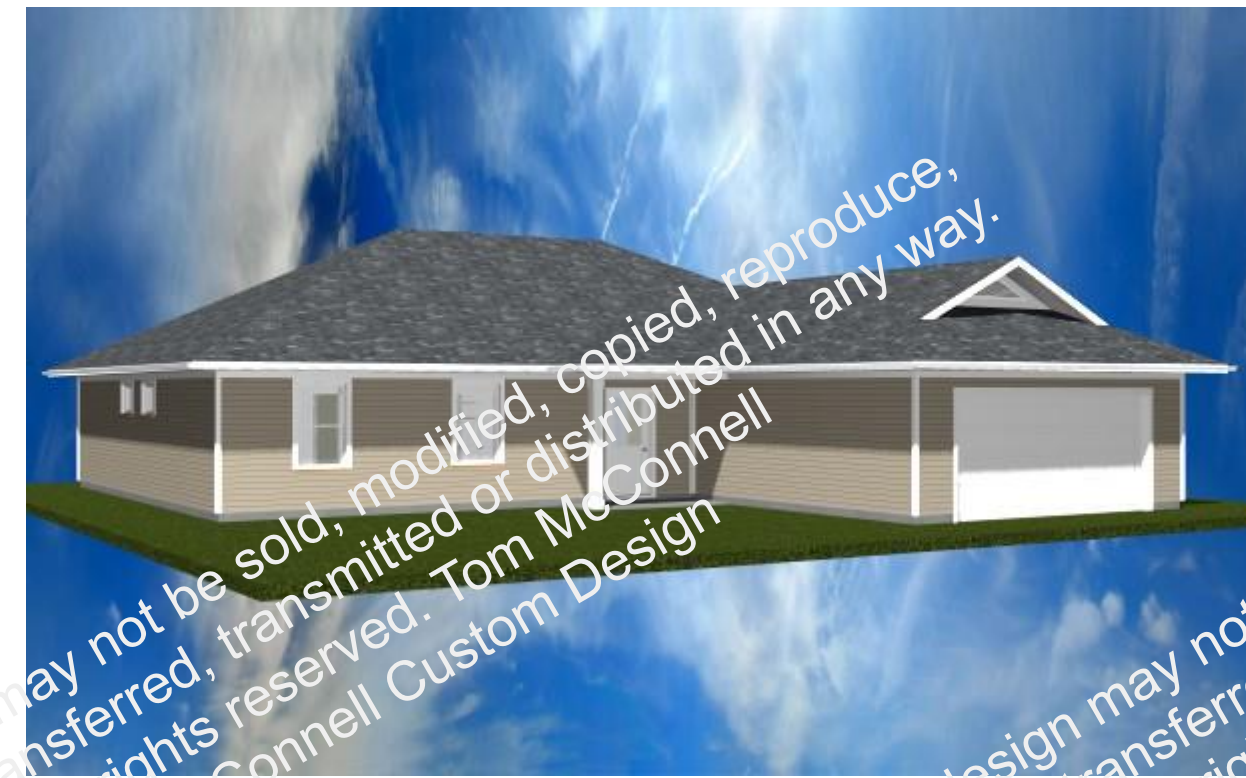
A2



IN-GR-KIT



IN-KIT-GR



EX-FRONT-LEFT



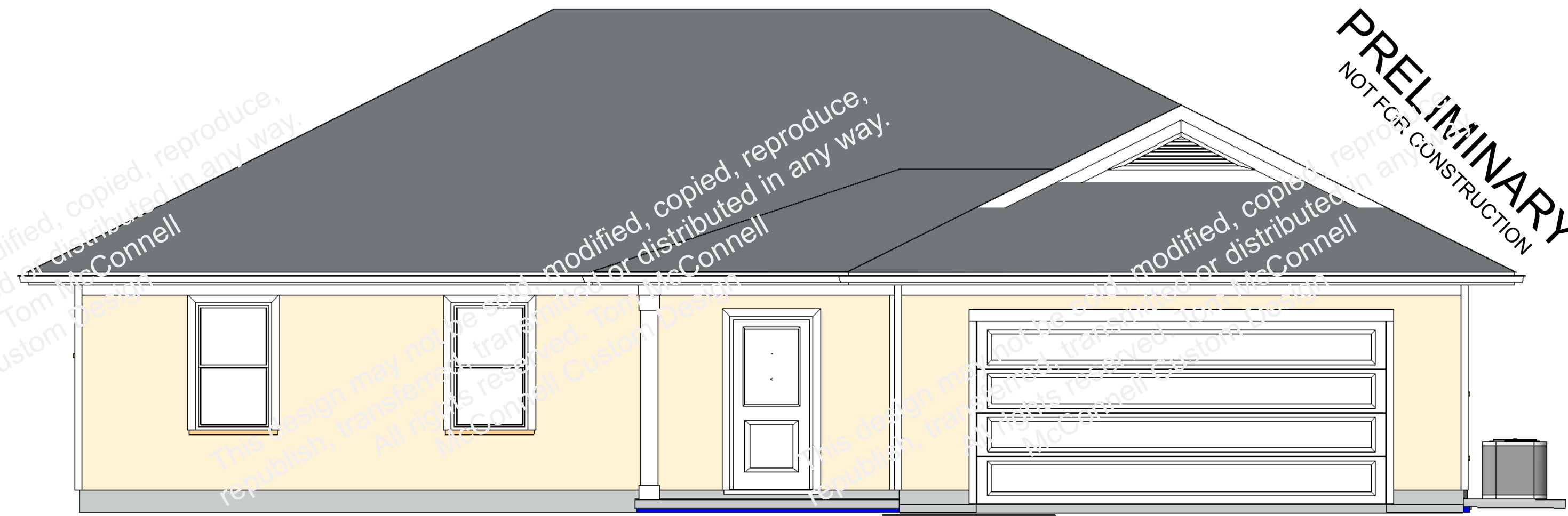
EX-FRONT-RIGHT



EX-REAR-LEFT

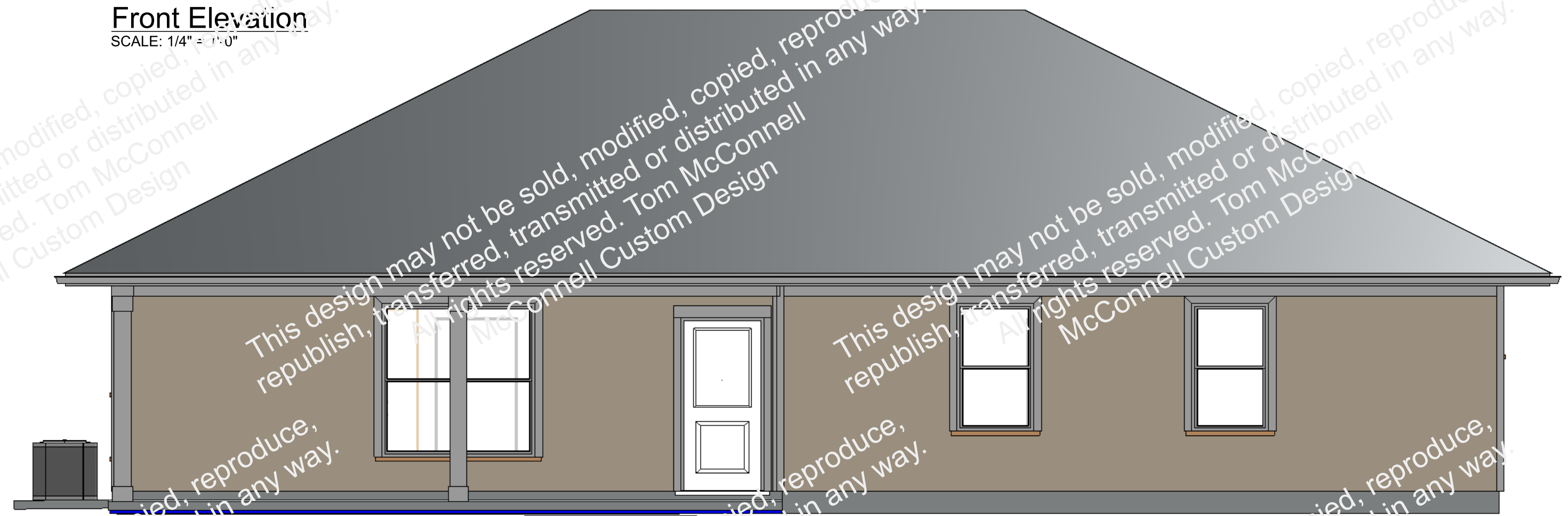


EX-REAR-RIGHT



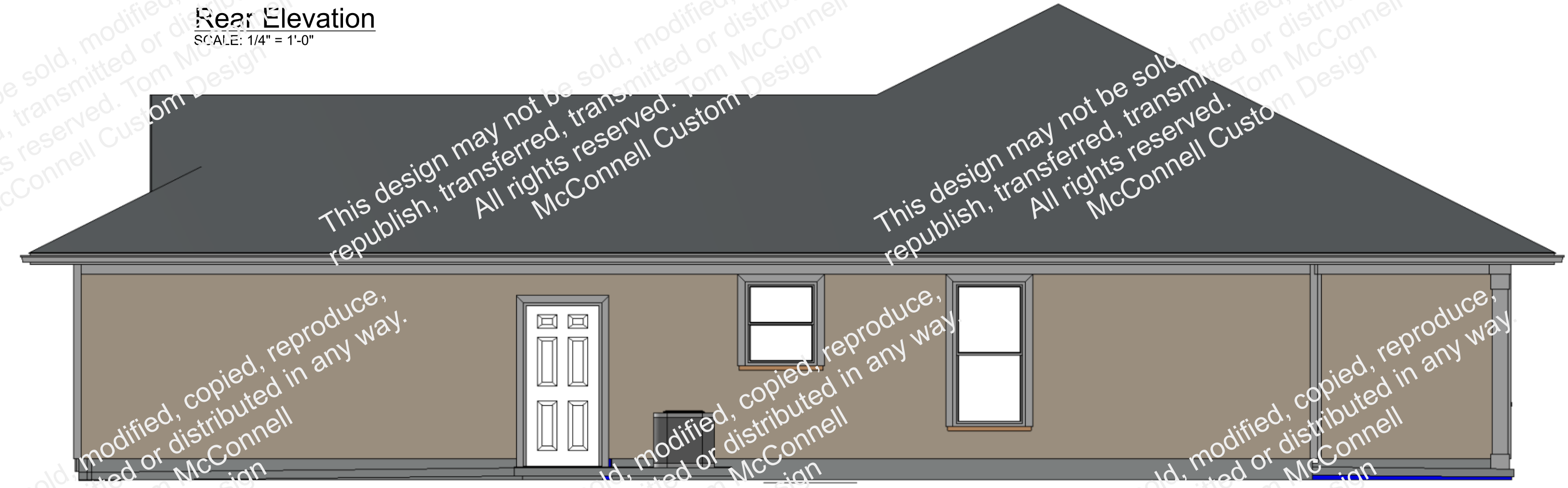
Front Elevation

SCALE: 1/4" = 1'-0"



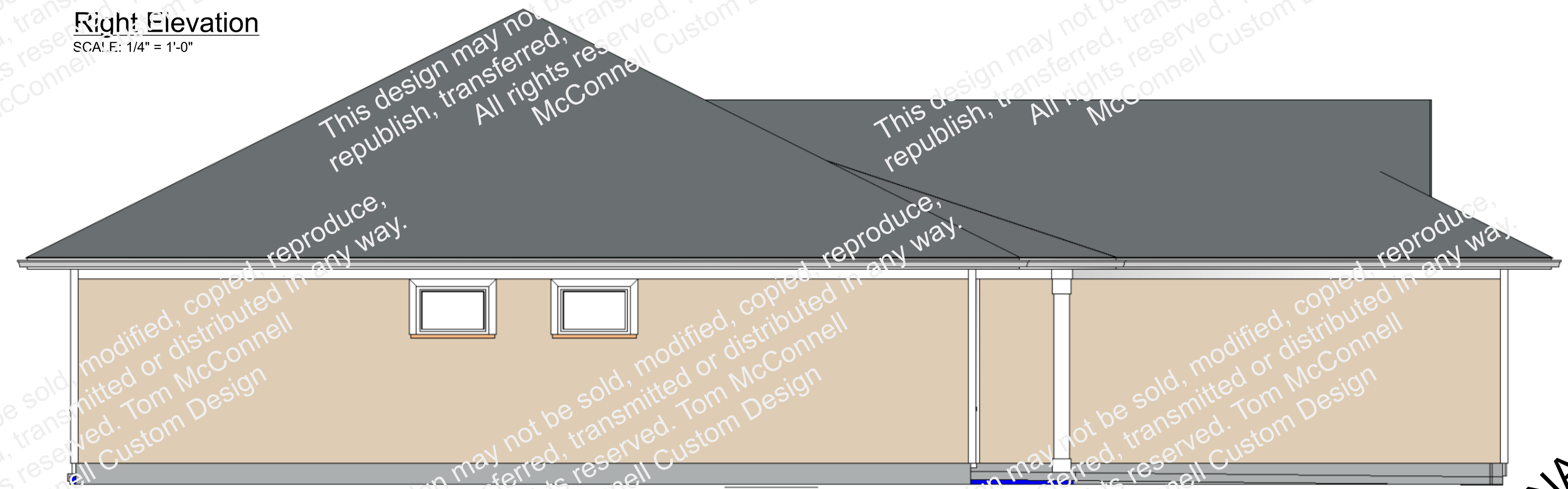
Rear Elevation

SCALE: 1/4" = 1'-0"



Right Elevation

SCALE: 1/4" = 1'-0"



Left Elevation

SCALE: 1/4" = 1'-0"

PRELIMINARY NOT FOR CONSTRUCTION

PRELIMINARY NOT FOR CONSTRUCTION

PRELIMINARY NOT FOR CONSTRUCTION

PRELIMINARY NOT FOR CONSTRUCTION



McConnell Custom Design
Since 1994
Custom Design Keeping Structure in Mind
Custom House Plans - Addition Plans - Remodel Plans
St. Johns County, FL and Surrounding Area
Central Florida (Orlando)
383 Jasmine Place
St. Augustine, Florida 32086
(904) 794-4500
staugustinehouseplans.com
(ENGINEERING BY OTHERS)

New Residence for:
Your Name
Your Street
Your Town

NOT FOR PERMIT

| REVISIONS |
|-----------|
| |
| |
| |
| |
| |
| |